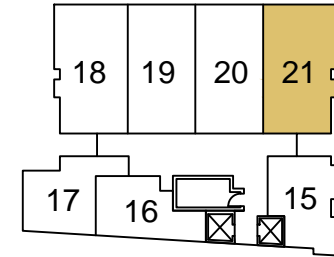
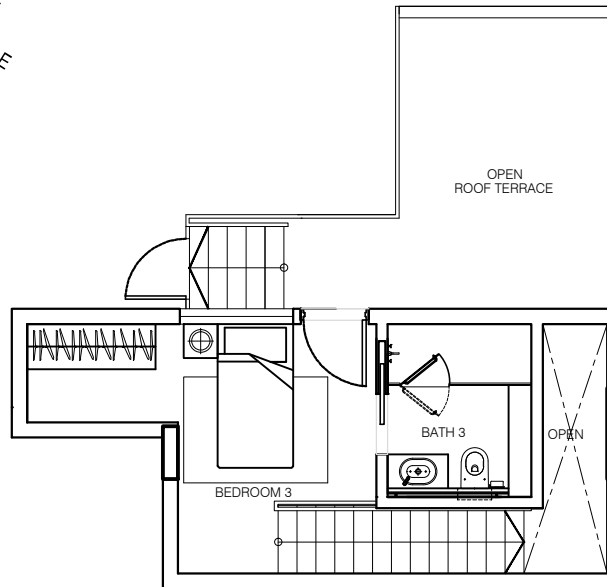
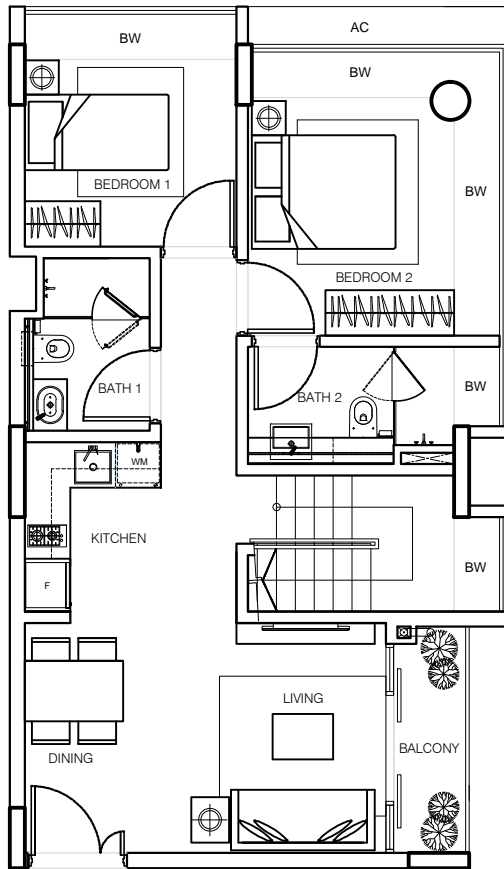


TYPE B2-A (3-Bedroom Maisonette)

Unit #05-21 1,173 sq ft



ESTIMATED TOTAL FLOOR AREA OF THE PROPERTY	109 Square Metres
Estimated Floor Area of: - (On 5th Storey)	
Master Bedroom (Including bay window & attached bathroom)	19 Square Metres (approx.)
Bedroom (Including bay window)	10 Square Metres (approx.)
Bathroom	4 Square Metres (approx.)
Living/ Dining/ Kitchen (Including staircase)	31 Square Metres (approx.)
Bay Window	1 Square Metres (approx.)
Balcony	3 Square Metres (approx.)
AC Ledges	2 Square Metres (approx.)
(On Attic)	
Family Area (Including staircase)	15 Square Metres (approx.)
Bathroom	5 Square Metres (approx.)
Roof Terrace	15 Square Metres (approx.)
Void	4 Square Metres (approx.)

PLEASE NOTE:

- A. The floor area is estimated by a registered surveyor based on the approved building plan for the Property and is measured from mid-wall to mid-wall.
- B. The estimated floor areas for the different uses and spaces included as part of the Property are indicated solely for reference and will not form part of the conditions for the sale and purchase of the property. The aggregate of these estimated floor areas are unlikely to be equal to the estimated total floor area of the property due to rounding adjustments.